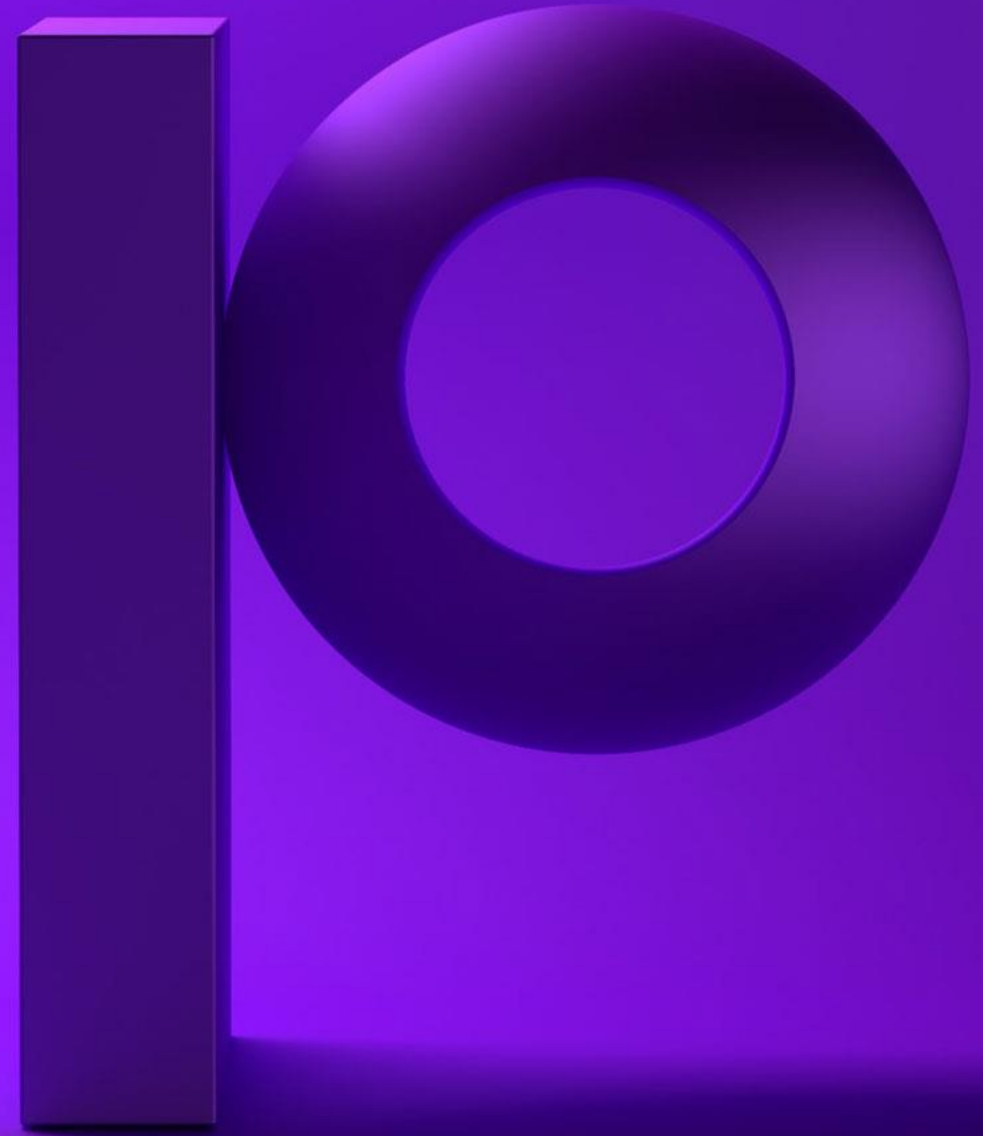


precisely

**Thank You For
Joining!**

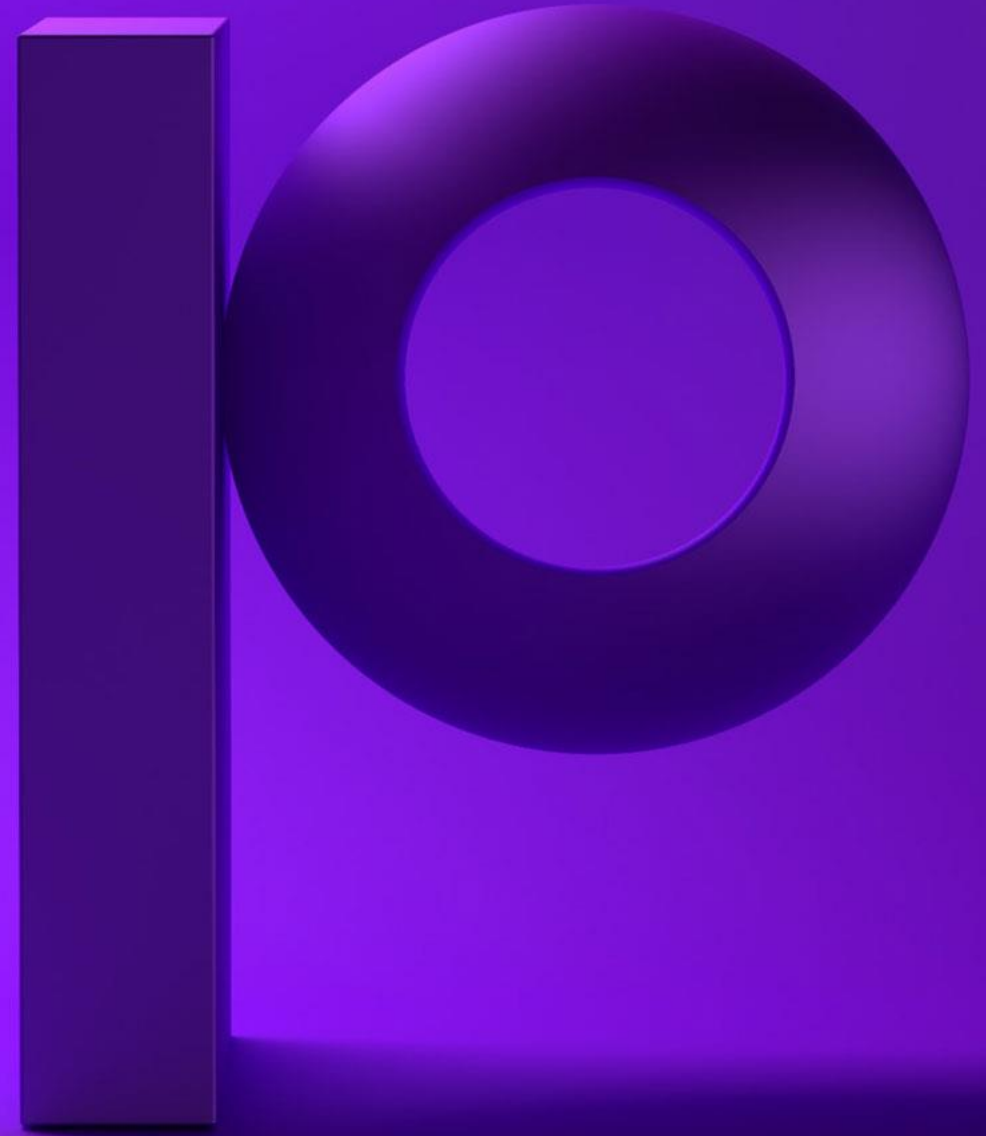
The session will begin at 11:00am ET



precisely

Trillium User Group (TUG)

December 4th, 2024



Welcome To Our Inaugural Trillium User Group Session!


Quick Orientation: On24 Platform


precisely

Slides

931X525 (16:9)

576X324 (16:9)

 **Jeffery Brown**
Director, Product Management
Precisely

 **Michael Sisolak**
Principal Sales Engineer
Precisely


Enter your question

Submit

Trillium Quality and Discovery Support Page

precisely
Trust 24
Love your data
Dive into game-changing strategies and exclusive content to enhance your

precisely
Named a Leader in Data Intelligence
GIC MarketLeader: Multiple Data Intelligence Platform Software 2024
Download Now



“There is immense power
when a group of people
with similar interests gets
together to work toward
the same goals.”

Idowu Koyenikan

Trillium User Group: The Who's And The Whys

- Who should attend?
 - Trillium users and team managers who are interested in learning how to get the most out of their investment
 - Please feel free to share future invitations with any colleagues or industry peers who might benefit from attending
- What Is this group all about?
 - Sharing Trillium tips and use cases from customers and Precisely subject matter experts
 - Showcasing Trilliums capabilities in the Quality and Governance spaces

Agenda

1

Trillium Roadmap

2

Trillium Usage Tips

3

Trillium User Group:
Direction & Focus

4

Question Period &
Closing Remarks

Jeff Brown



Senior Director, Product Management

Jeff delivers customer-focused solutions and drives strategic direction for a broad portfolio of Precisely Data Quality and Data Analytic products

Mike Sisolak



Principal Sales Engineer

Mike has been working in the data management space for over 20 years, specializing in Data Quality, Data Governance and Data Integration for Big Data/Cloud data sources.

Matt Malczewski



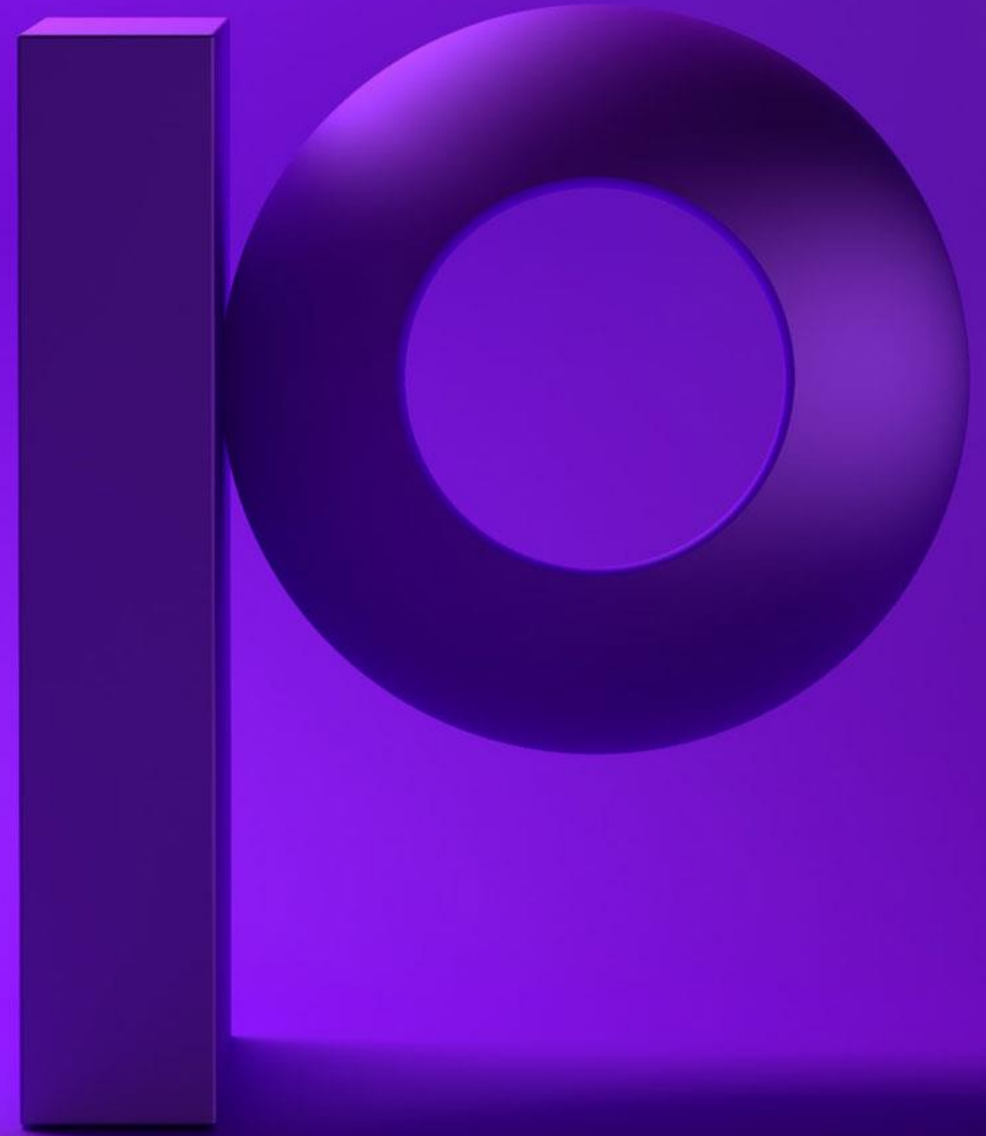
Customer Programs Manager

Matt has been working in Customer Enablement/Customer Engagement for over 17 years, primarily in the analytics space. He is passionate about helping customers get the most out of their investment and ensuring they get the most out of their technology usage.

precisely

Trillium Roadmap

Jeff Brown | Precisely



Roadmap: Trillium Discovery & Quality – 2023

Delivering Value through Trust

	Delivered: April 14, 2023	Delivered: May 25, 2023	Delivered: December 15, 2023
DELIVERY	v.17.1	v.17.1 Connectors	v17.2
MARQUEE FEATURES	<p>Seamless Release Upgrades</p> <ul style="list-style-type: none"> Existing customers upgrade to v17.1 from Windows: v.15.7.4 and 16.1; Linux: 15.7.4, 15.8.2, 16.1; <p>Performance</p> <ul style="list-style-type: none"> Stabilized performance <p>Additional Support for:</p> <ul style="list-style-type: none"> Drivers - DOUBLED from previous release* RedHat 8 Windows 11, Windows Server 2022 <p>Security Updates</p> <ul style="list-style-type: none"> Token Based authentication Additional Security Remediations 	<p>Better integration</p> <ul style="list-style-type: none"> Data Integrity Suite Govern Collibra Integration Connector Support (SAP, Dynamics) 	<p>Ease of Use</p> <ul style="list-style-type: none"> Picklist Drop-Down for CRM Connector Trillium Discovery for Collibra – Support for AWS Secrets Manager and S3 Localized Versions (Q1 '24) <p>Support for</p> <ul style="list-style-type: none"> Encryption-at-Rest RedHat 9 Cross-platform migration <p>Platform Upgrades</p> <ul style="list-style-type: none"> SuSE Linux 15.x CICS v6.1 Spark 3 (TQBD) <p>Support for</p> <ul style="list-style-type: none"> CASS Cycle O** certification (Oct)



Roadmap: Trillium Discovery & Quality – 2024

Delivering Value through Trust

DELIVERY	Delivered: Oct 18, 2024		
MARQUEE FEATURES	<p data-bbox="524 401 970 436">Support Single Sign-on/SAML</p> <ul data-bbox="524 448 1009 522" style="list-style-type: none">• Ability to login without entering username and password <p data-bbox="524 576 805 612">Support for LDAPS</p> <ul data-bbox="524 624 1059 741" style="list-style-type: none">• Encrypts data exchanges between client and server• LDAP over SSL	<p data-bbox="1161 401 1434 436">Platform Upgrade</p> <ul data-bbox="1161 448 1544 484" style="list-style-type: none">• Java 11 support in TQBD <p data-bbox="1161 538 1472 574">Postal Data Matcher</p> <ul data-bbox="1161 585 1735 1032" style="list-style-type: none">• UK Postal Matcher to test if house number contains flat• Option to return only data held in the Royal Mail PAF file• Ability to match a sub building range for GB postal match• GB Postal Matcher - Ability to return City if only postal code provided• Reverse Geocode - obtaining an address when presented with a Lat/Long	<p data-bbox="1811 401 2211 436">Updates to Country Tables</p> <ul data-bbox="1811 448 2321 522" style="list-style-type: none">• Updates to Argentina and Spain Country Tables <p data-bbox="1811 576 2397 612">User Management for Discovery Center</p> <ul data-bbox="1811 624 2372 698" style="list-style-type: none">• Manage users from within Discovery Center web interface



Precisely Trillium Roadmap Themes 2025



Technology

- Operating System and Server Compatibility
- Connector Plugin Updates (SAP, MS Dynamics)



Security

- Customer requested Improvements
- Internal Security Testing Updates
- SSO for Thick Client
- Multifactor Authentication



Integration

- Strengthen Integration with Data Integrity Suite for:
 - Data Observability
 - Data Quality
 - Data Governance

Knowledge Community

Knowledge Communities | Home | Communities | Announcements | FAQs | Precisely Sites

Trillium

< Share | Settings

Community Home | Discussion 42 | Library 2 | Events 0 | Members 60

Welcome to the Trillium community! Please feel free to start a discussion in the discussion tab or join in a conversation.

Here are some useful links where you can find more information:

Product Announcements | Ideas Portal

Latest Discussion Posts Add

- Trillium User Group Launch: December 4th
By: Matt Malczewski, 12 days ago
I'm thrilled to share that we are launching a Trillium User Group. These recurring events will focus on sharing tips and use cases to showcase the capabilities of Trillium and help you become more comfortable, confident and innovative in your usage. ...
1 person likes this.
- Gartner Reviews for Augmented DQ Solutions - Give Your ...
By: Matt Malczewski, one month ago
As part of their research for Augmented Data Quality Solutions, Gartner is asking for customer input on Precisely's Trillium solution through their Peer Insights portal. All reviews on the Peer Insights portal are anonymous. We would greatly appreciate ...
1 person likes this.
- RE: Use data360 Analyze to extract Trillium Discovery ...
By: Marco de Jong, 7 months ago
Updated version for 17.2 with Token Based Authentication, the basic authorization value is also generated based on the credentials in this example. Regards Marco
Marco de Jong CTO IntoDQ2

More

Most Active Members (Last 30 Days)

- Elazul Haque
22 Points
- Sebastien Godét
7 Points
- Gavriel Meir-levi
7 Points
- Smitha Nair
7 Points

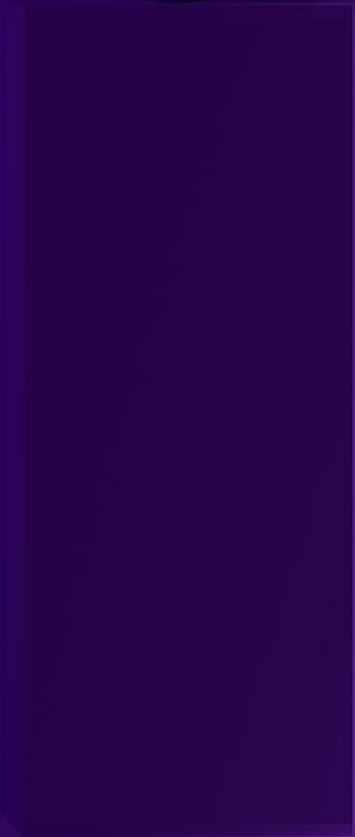
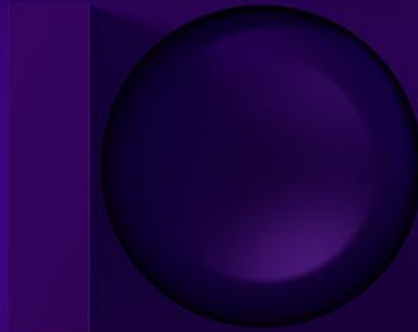
About Precisely | Customer Support | Copyright ©2024 Precisely. All

- Communities
 - Discussion Forums
 - Product Announcements
 - Library
 - Events
- Product Documentation
- Precisely Ideas
- Precisely Data Experience

Links:

- <https://community.precisely.com/>
- <https://ideas.precisely.com/>
- <https://data.precisely.com/>

Thank you



precisely

Trillium Usage Tips

Mike Sisolak | Precisely



Did you know?

Trillium was owned by Harte Hanks

- Syncsort (now Precisely) acquired Trillium starting January 2017

Precisely just released Trillium 17.3

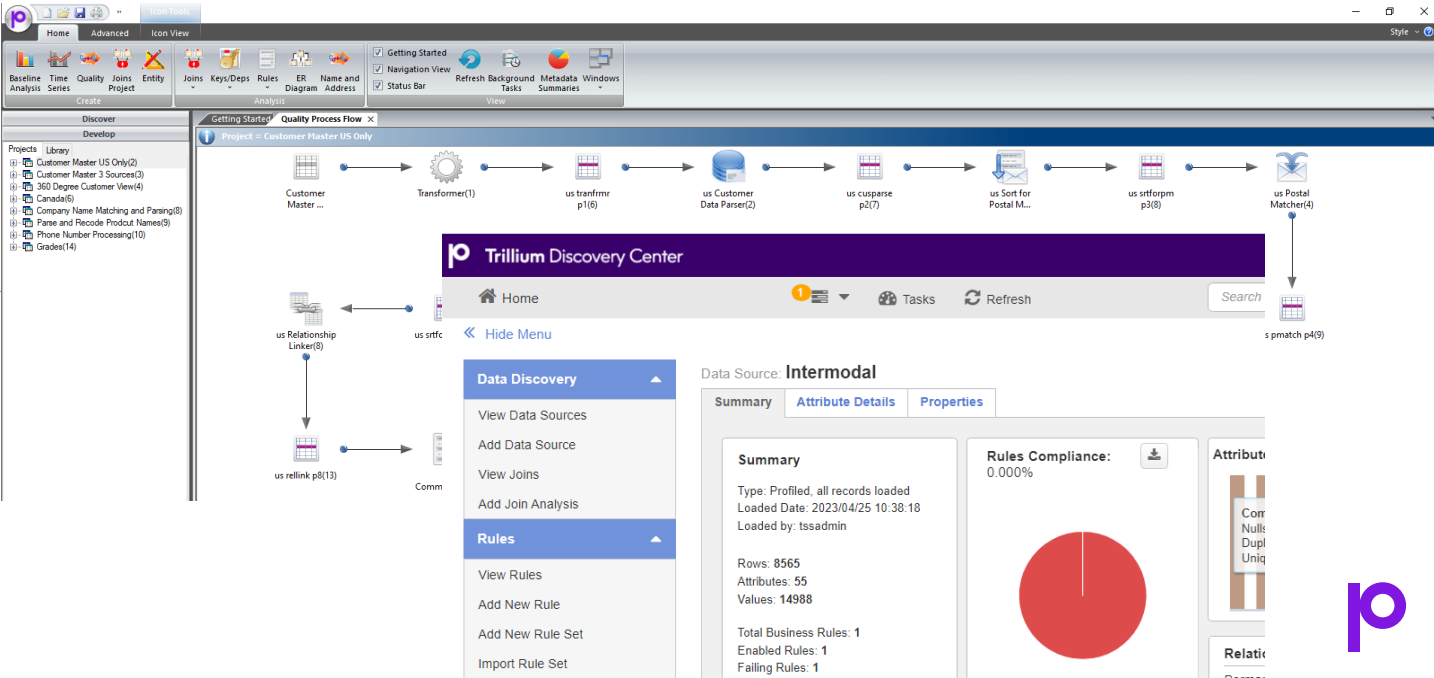
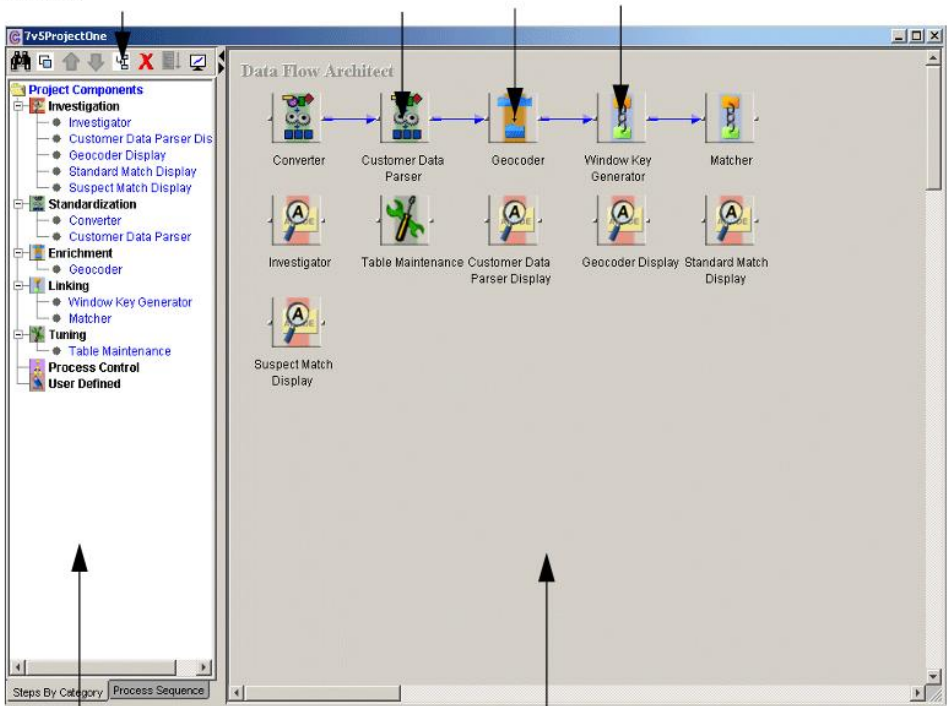
- The oldest version I have encountered is Version 6.0

Trillium is a highly recognized name for Data Quality

- Many customers of Precisely use Trillium

Click to open the step palette window

Double-click any module to bring up the step window



Term that is a powerful tool in Trillium Quality



Same house?

- Last name coupled with
 - Address and/or
 - home phone



Same person?

- Name coupled with
 - address
 - phone
 - tax id
 - email
 - company



Same location?

- Company coupled with
 - Address
 - URL

What is multi-match!



Same house?

- Last name coupled with
 - Address and/or
 - home phone



Same person?

- Name coupled with
 - address
 - phone
 - tax id
 - email
 - company



Same location?

- Company coupled with
 - Address
 - URL

Did you know?

Trillium can in process data in multiple languages

- Japanese example

Menus, options, windows, statistics, log files and messages can all be localized

Trillium can be localized to the following languages:

- Brazilian Portuguese
- Chinese, Mainland
- Chinese, Taiwan
- French
- German
- Italian
- Japanese
- Korean
- Spanish

The screenshot displays the Trillium software interface with the following components:

- Summary Tab:** Shows a list of attributes on the left and a 'Details for: Addressline2 Dup 1' section on the right. The details section includes a 'Values' summary with a bar chart showing 2 Nulls, 0 Duplicates, and 18 Unique Values. It also shows a 'Range' section with Maximum Value (鹿児島県...), Minimum Value (久恒真), Mode Count (18), and Mode Frequency (1).
- Patterns Tab:** Shows a bar chart for 'Character Patterns'.
- Structure Tab:** Shows a pie chart for 'Data Type'.
- Data Table:** A table with columns: Frequency, Value, Distribution %, Length, Pattern, and Mask. It lists various Japanese addresses and their corresponding patterns and masks.
- Attribute Summary Tab:** Shows a table with columns: Frequency, Value, and Distribution % for the selected attribute.

Frequency	Value	Distribution %	Length	Pattern	Mask
1	久恒真	5	3	?3	AAA
1	千葉県香取市佐原10-59	5	13	?8d2pd2	AAAAAAAAANN-NN
1	埼玉県さいたま市 大...	5	25	?19d2pd3	AAAAAAAA AA...
1	埼玉県さいたま市 浦...	5	24	?18d2pd3	AAAAAAAA AA...
1	埼玉県さいたま市 見...	5	24	?20d2pd	AAAAAAAA AA...
1	埼玉県ふじみ野市池上...	5	14	?10d2pd	AAAAAAAAAANN...
1	宮城県仙台市 泉区市...	5	17	?12d2pd2	AAAAAA AAAA...
1	山口県周南市川上00-1...	5	15	?8d2pd4	AAAAAAAAANN-N...
1	山梨県甲州市塩山 一...	5	18	?14d2pd	AAAAAAAA AA...
1	山梨県笛吹市春日居町...	5	19	?13d2pd3	AAAAAAAAAA ...
1	岩手県	5	?	??	AA



Did you know?

Data Quality volume often is a challenge for organizations

Some Precisely Trillium customers process over 50 million records per hour

That add up to a potential volume of over 400 Billion records per year!

Comparatively 50,000,000 mph = 0.0746 Light Speed*

* Precisely assumes no indemnification and is held harmless by the viewing these statistics. We regard your wellbeing to be of paramount importance and we will brief you regarding the operating guidelines when leveraging Precisely Trillium at 0.0746 light speed. Objects in the mirror may be closer than they appear and use the force, Luke. 😊



Did you know?

Trillium Discovery business rule results are used to support data governance?

Fields that are typically used are:

- Passing Rows
- Failing Rows
- Passing Fraction
- Rule failure? (Y/N)
- Threshold

The failing rows are often used for:

- Impact analysis
- Case management
- Business process remediation
- Data for ticketing

Rules Search Results Last Updated 2023/11/08 14:54:40

Rules Results **Rules Metadata**

Select Page

	Rule Name	Threshold
<input type="checkbox"/>	TEST	
<input type="checkbox"/>	Company Name Check	
<input type="checkbox"/>	SSN Check	
<input type="checkbox"/>	GeoLocationName Check	
<input type="checkbox"/>	Grade Test	

Failing Results

Select Page

	Ssn	Row	Client Id	Gender	Title	Give
<input type="checkbox"/>	42728264	20	20	female	Ms.	Carm
<input type="checkbox"/>	67204129	96	96	male	Mr.	Robe
<input type="checkbox"/>	67580684	126	26	male	Dr.	Branc

Did you know?

Trillium Quality is fast. Why is that?

By limiting the number of records compared, Window Keys dramatically decrease the time and system resources needed to link records.

How do we make a Window Key? We take the:

- 1st 3 characters of ZIP code
- 1st 2 consonants of last name
- 1st 3 characters of the street name
- Name form (1=personal, 2=business)

Match Window

Mary Rogers
34 Lincoln Road
Billerica, MA 01821

Mary Ruggles
34 Lincoln Road
Billerica, MA 01821

Window Key
018RGLIN1



Not In Window

Mary Rules
25 Linnell Circle
Billerica, MA 01821

Window Key
018RLLIN1



What's shown here is an example. It's fully configurable! Try it at home!

Did you know?

Years ago, the phone was the quickest way to reach and identify someone...



Did you know?

Phone numbers are used less and less by customers as identifiers?

Why? People...

- tend to have multiple phones in a household or even per person
- change numbers at will
- don't usually have a 'home' phone or landline

Precisely can help:

- Other fields can be used as part of a matching routine
- A multi-match project can allow for other criteria to be used

Bottom line:

- This can lead to more efficient matching of records

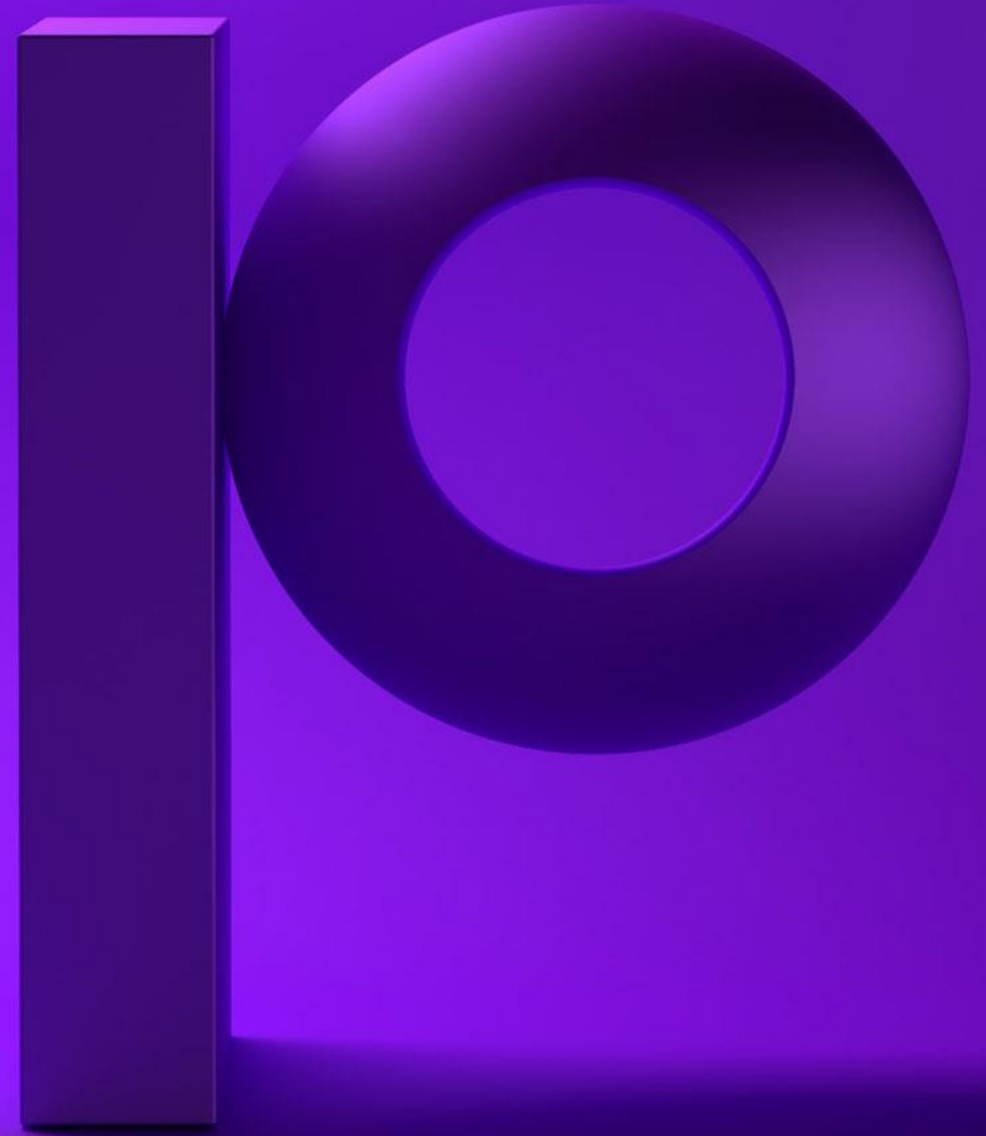


Thank you

precisely

Trillium User Group: Direction & Focus

Matt Malczewski | Customer Programs Manager, Precisely



Our Current Vision...

- Inaugural meeting structure/format informed by conversations with customers and Precisely team members who are in regular dialogue with customers
- What we've learned (so far):
 - Achieve a balance between technical topics & strategic/business level topics
 - Customers want to hear from customers (use cases, day-to-day usage tips, leveraging the capabilities of the solution)
- For future meetings:
 - Question & Answer sessions – you submit your questions in advance, we address them as a group in the subsequent meeting
 - Co-presentations – Precisely and customers tackling a talk together
 - Customers collaborating with customers – the power of this group will come from sharing knowledge together

Your Opportunity To Offer Input

- Your perspective is invaluable to helping define the structure of this group moving forward
- We want to get to know you and your interests!
- 2 live poll questions
 - Which elements of Trillium would you like to hear about at future meetings?
 - What type of content do you want to see?

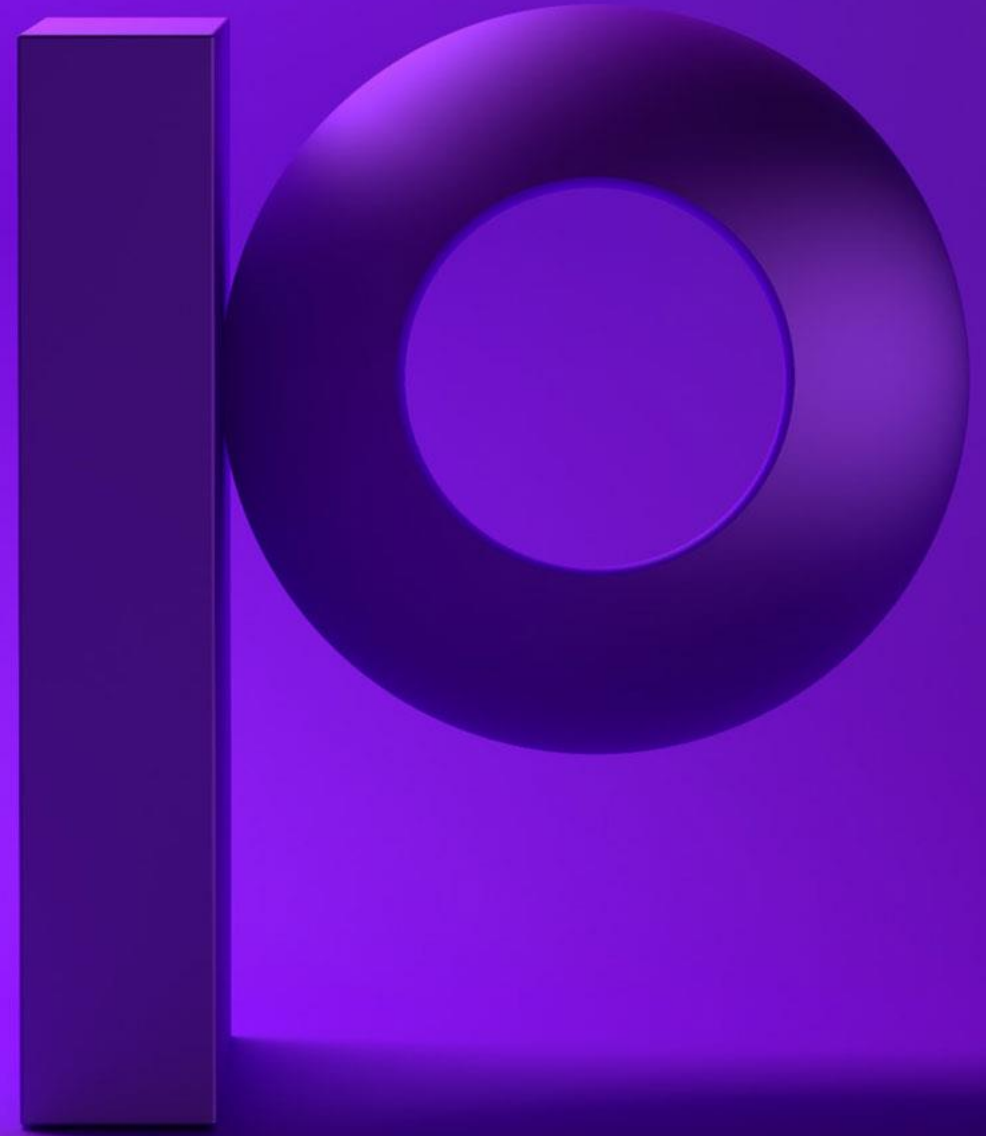
Your Opportunity To Offer Input

- We welcome all input – participation is vital to ensuring that this group benefits all
- The more we all put into this shared experience, the more we will all grow
- For next meeting: do you have questions (technical, strategic) which we can address? Please submit in advance to Matt Malczewski (matt.malczewski@precisely.com)
- More detailed survey to follow via email accompanying access to our content repository

precisely

Question Period & Closing Remarks

Matt Malczewski | Customer Programs Manager, Precisely



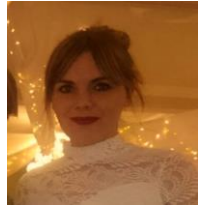
Upcoming Events

- **Dec 11** - From 2024 Lesson to 2025 Predictions: Modern Data Governance and Quality
[Registration Link](#)
- February 2025 – Trillium User Group
- February 20, 2025 – Data Governance Modernization Session
- March 20, 2025 – Data Governance User Group

Trillium Customer Success Team



Brenda
Stoetzer



Christina
Costello



DeeDee
Jimenez



Jennie
Richardson



Liz
Dorner



Liz
Wright



Younes
Benhaddou



Ben
Hayhurst



Mitch
Williams



Stephen
Morganson



Shabana
Fazal



Susan
Foor



Patricia
Flores



Sarah
Smith



Afsane
Anand



Sherri
Chambers



Prescilla
Baldoz



Alex
McKenzie



precisely

Customer Success



Cali
David



Ghali
Mazzouri



Kevin
Kliska

Thank You

Questions And More Information:

matt.malczewski@precisely.com

precisely

Breaking News!

precisely

Named a
Leader
in **Data Intelligence**

IDC MarketScape:
Worldwide Data Intelligence Platform Software 2024

[Download now](#)

The badge features a dark blue background with a glowing lightbulb icon in the center. The background is decorated with faint, repeating geometric patterns of circles and rectangles. The text is white, and the 'Download now' button is a bright blue pill shape.

Precisely In The News

- **Precisely Named a Leader in IDC MarketScape: Worldwide Data Intelligence Platform Software, 2024**
 - Technology Magazine: https://technologymagazine.com/pr_newswire?rkey=20241114EN55657&filter=21761
 - Decideo (FR): https://www.decideo.fr/Precisely-nomme-leader-dans-le-rapport-2024-d-IDC-MarketScape-Worldwide-Data-Intelligence-Platform-Software_a14006.html#google_vignette
- **AiThority Interview with Tendü Yogurtçu, CTO at Precisely**
 - AiThority: <https://aithority.com/machine-learning/aithority-interview-with-tendu-yogurtcu-cto-at-precisely/>
- **LeBow Report Pick Up in Germany**
 - SaaS Magazin (DE): <http://saas-magazin.de/saasondemandmarkt/studien/datenqualitaet-und-datenintegritaet-precisely271124.html>
 - <https://www.saas-magazin.de/2024/09/11/precisely-nachfrage-und-qualitaet-und-integritaet-der-daten/>
- **Demystifying Data Mesh Article in Computer Weekly**
 - Computer Weekly (DE): <https://www.computerweekly.com/de/meinung/Entmystifizierung-von-Data-Mesh>